

**CREATED BY INDUSTRY PROFESSIONALS FOR INDUSTRY PROFESSIONALS**

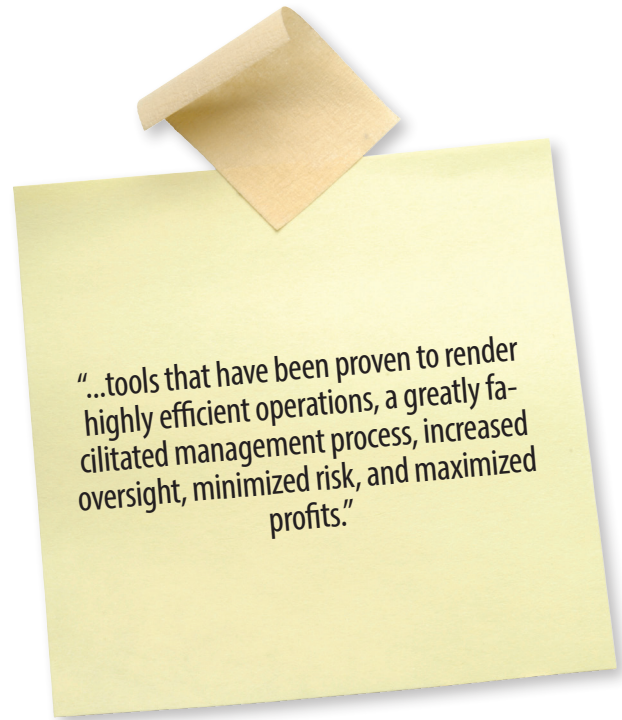


**Experience what distinguishes us above the rest**



Since 2002, Arbelsoft has established itself as a leading software firm specializing in the creation, distribution, and installation of POS Computer System packages and software that have been exclusively created for facilitating the operational management of dry cleaning businesses, shoe repair services, Laundromats and Tailoring Services.

John Parker, the CEO of Arbelsoft, has successfully operated numerous satellite stores in Manhattan for over 30 years. His dedication to serving the industry can be reflected by the longevity and success of Tower Cleaners, his current Dry cleaning enterprise, his membership in numerous industry associations and the countless number of innovations he has conceived for creating a versatile product line that has improved a wide range of businesses worldwide. Mr. Parker is a Professional Member of the Dry cleaning and Laundry Institute, a Member of the Textile Care Allied Trades Association, a Certified Environmental Drycleaner and Certified Professional Drycleaner since 1999, and has served as a board member of the NIE Insurance Advisory Committee from 2004 – 2008. Arbelsoft is a Dell Registered Partner, Certified Star Printer software partner, a Better Business Bureau Accredited Member with an A+ rating, and a supplier member of the SSIA, Shoe Service Institute of America. and PFA, Pedorthic Footwear Association.





## OUR MISSION

LAUNDROMAX®  
The Ultimate Solution for Laundromats

“SERVING OVER 3400 CLIENTS  
INTERNATIONALLY”

Expertise

 Experience offers many important lessons, especially when it comes to creating a product that can continuously service and improve your businesses. During a time span now exceeding 2 decades of working in the dry-cleaning sector, John Parker has learned and devised ways in which to tackle problems that can arise in day-to-day management and operations. To name a few, these include but are not limited to preempting garment loss, eliminating floating garments, streamlining tagging, rack assignments, delivery processes, managing customer requests, selecting accurate upcharges and order details, heightening communication between the headquarters and its satellite stores, managing garment sorting, employee attendance, and more. After the very first version of CleanMax was launched in 2002, the program was tested and debugged, but more significantly we were able to finesse our products from this trial period and address additional issues that one is likely to encounter as a business owner in the dry cleaning industry. Seven years later, we can say that we are confident that our product will better your business because have continued to constantly innovate and improve our products every step along the way.

 We are proud to have delivered powerful management solutions to over 3400 businesses internationally. Most of all, we value the lasting impact that we have created for our clients and the value we can create for your business with tools that have been proven to render highly efficient operations, a greatly facilitated management process, increased oversight, minimized risk, and maximized profits.

 At Arbelsoft, our clients come first. We will continue to uphold our firm dedication to you through constant innovation, creation, and improvement so that we can provide you with the best service possible. Our dedication has attracted thousands of customers globally and we would love to serve you! Come see what Arbelsoft is about and start experiencing the difference!



## "Greatly Facilitates Management"

**LaundroMax** was designed to facilitate management for EVERY Laundromat owner, regardless of how many stores you operate. In the retail industry, two of greatest obstacles business owners must overcome are barriers to exercising strong inventory control and tight cash control. Oftentimes, it is not a lack of management skills that makes this hurdle more difficult, but rather, a condition that can be accredited to a lack of the proper tools and technology. With LaundroMax, whether you are on site or operating from home, you can view real-time details and indicating statistics of your business status for each location

that you own, monitor activity, communicate with any of your employees through our internal e-mail system, and diagnose problems as they occur. To name a few, these include the current volume of sales, employee attendance, employee payrolls, payment statuses, reports, cash flows, tickets ready by that day, overdue tickets, uncharged amounts, void tickets, and credits issued. LaundroMax also offers a solution to managing your bills via integrated credit card processing for quick and simple batch charge processing. Once you introduce LaundroMax to your business, it can become your most useful aide, manager, and consultant.

## "Accounts for the Complexities of your Business"

LaundroMax, an exclusive Laundromat POS Software and Computer System can be used on its own or in combination with CleanMax and / or SyncMax depending on the individual demands of your business. The POS systems come in both standard and full versions with both Econo and Premium packages for each version. LaundroMax also provides an option that lets you save customer preferences under their account, so that these details can provide crystal clear direction for perfect task execution every time. Customer satisfaction is the crux of any successful enterprise and LaundroMax can help you achieve it.

A unique feature of LaundroMax is that it enables for you to receive customers drop off orders while selling a variety of consumer goods such as Tide, Downy, Clorox, Cheer, Bounce, etc. In the case that a customer only wishes to buy some consumer goods, you can apply charges for those items only by scanning the UPC code with an omni directional barcode scanner or simply by selecting the corresponding button for the item on the computer screen. A single screen occupies enough space to

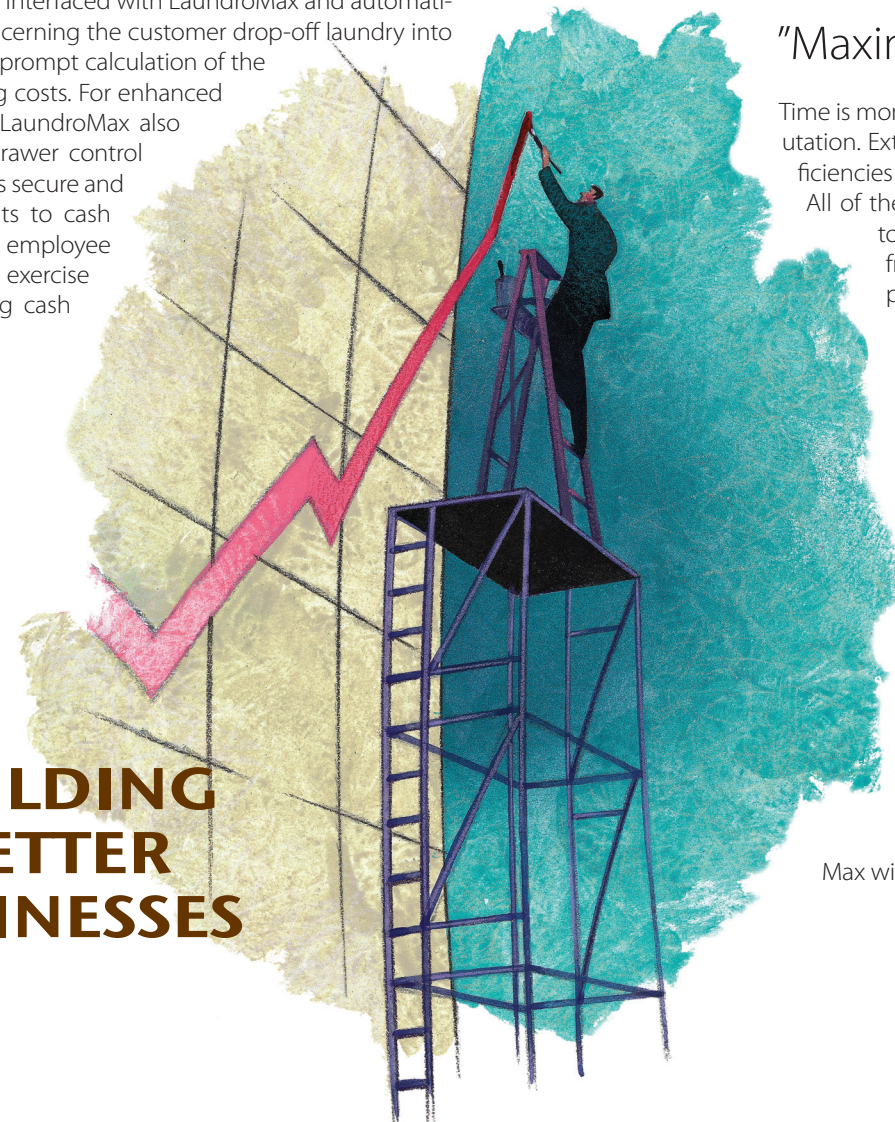
store up to 312 different kinds of consumer goods and our program can further accommodate an unlimited number of pages, which makes it perfect for all business owners both large and small.

The most mainstream POS scales including Mettler Toledo, A&D and CAS have been interfaced with LaundroMax and automatically enter data concerning the customer drop-off laundry into the computer for a prompt calculation of the machine's operating costs. For enhanced security measures, LaundroMax also uses a dual cash drawer control technology that sets secure and specific access limits to cash drawers for each employee shift so that you can exercise accurate and strong cash control.

### SECURITY

- Portable & Remote Hosting Backup
- Back Office Data Replication
- LaundroMax-Only Screen (CleanMax, TailorMax as well) Blocks off all other programs for virus protection
- No System Down (NSD) Feature  
Secondary operating systems can immediate function upon primary OS corruption or failure.
- Biometric Recognition – Absolute Cash Control
- Credit Card Encryption to protect customer data by PA-DSS Certification
- Set employee specific cash register access rights
- Dual Cash Drawer Control Feature
- Whole or independent closing by an employee or shifts.

## BUILDING BETTER BUSINESSES



## OUR STRENGTHS



### "Promotes Highly Efficient Operations"

One thing any business could benefit from is finding ways to save time wherever possible so that its employees can allocate their time into more profitable and efficient operations. LaundroMax computerizes a majority of processes that would have been performed manually otherwise such as issuing tag numbers, determining the quickest delivery routes, and processing tickets. LaundroMax can recognize all barcode tags and automatically aligns garments to its proper ticket. The sorting system greatly saves time and manpower, and prevents garments from being mixed up or misplaced. The system capacity is adaptable to all business requirements.

**LaundroMax** offers the option for implementing various sales taxes, tax exemptions for certain items, and universal taxes and rates such as GST, PST, VAT, in order to maximize the utility of our software for both foreign and US users. LaundroMax facilitates stock entry and reports with an immediate confirmation of your current inventory between all employee shifts so that you can keep track of sales, prevent potential losses or miscalculations, and minimize your business liabilities.

### "Maximizes Profits"

Time is money. Losses cost money and potentially your reputation. Extraneous supplies cost money. Operational inefficiencies cost money. Inaccurate upcharges cost money.

All of these factors may be chipping away at your bottom line. Our customers have reported anywhere from a 15 - 20 % increase in profits after using our products. We'll tell you where these cost cuts and increases are coming from:

**LaundroMax** offers an extremely safe inventory control and total inventory traceability to prevent losses, cash control to prevent theft, and the ability to diagnose when, where, and under whose supervision cash deficits have occurred. All of LaundroMax's security functions will increase employee productivity. While creating a business environment of transparent and efficient operations.

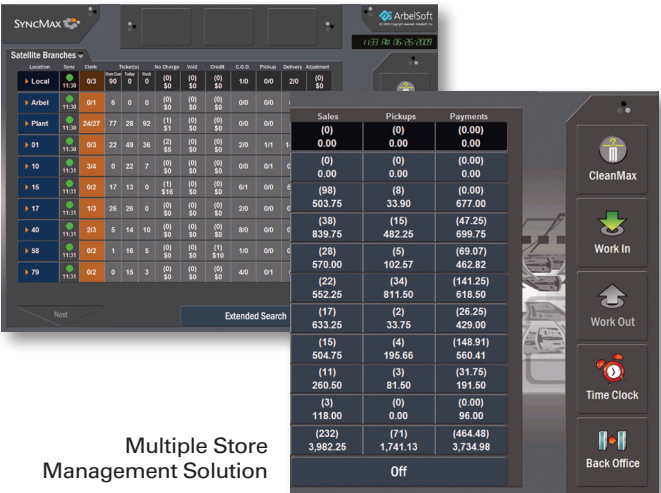
LaundroMax ticketing functions achieve a level of depth and precision that no other product can provide. This is an asset that will prevent your employees from making incorrect, overgeneralized or undervalued upcharges that do not align with your expenses. LaundroMax will maximize your profits with less work.

### FACILITY

- Sleek and Compact \*15" ELO Touch Screen Monitor
- Compact Software Design: Handle numerous complex tasks on a single screen without volleying between screens
- Simultaneous execution of customer orders and sales of consumer goods
- One Consolidated Customer Ticket Always
- Prints customer ticket, store ticket & barcode stickers for inventory in one step
- Integrated Credit Card Processing
- Quick Inventory Scanning – UPC Codes or create your own SKU stickers directly
- Quick Scan - Inventory Locator
- Quick Info: View key statistics of your current business status from any location
- Job Progress Tracker, Employee Efficiency Monitor, Pending Tasks List
- Double Confirmation for Route delivery service
- Hide Rack location function
- Integrated Caller ID Feature



## “Gain Strict Oversight”



The **SyncMax** software is ideal for business owners operating large scale businesses with multiple store locations. SyncMax is a two way data transfer and communication system for the remote operation of satellite locations. The system is a perfect complement for LaundroMax and specifically allows for you to track the delivery status at each of your stores in order to prevent garment loss.

## Multiple Store Management

The system promotes an effective business environment and provides invaluable insight into the day to day occurrences within your business such as employee attendance, overdue tickets, tickets ready by that day, uncharged amounts, void tickets, credits issued, collective c.o.d. payment amounts, the status of work-in-progress inventory, employee progress, and the number of adjusted payments. Additionally, you can view the status of all sales and payments and consolidate financial reports and statements for easy viewing or to make physical copies for future reference and / or distribution. Billing can be managed quickly and effectively through batch charge processing from anywhere in the world.

**SyncMax** uses real-time streaming for all data and information that passes through to the headquarters, hence empowering you with the ability to effectively & collectively manage your business from any location.



## Absolute Inventory & Cash Control

**LaundroMax** provides tight cash control with accurate and easy inventory tracking features, closing statements, and accountability that allows for you to track sales statistics and cash flows between every employee shift. Furthermore, the program offers secure access rights you can preset for specific employees.

After each day, LaundroMax creates a closing statement that indicates sales statistics and any cash surpluses or deficits. By keeping tabs on these closing statements daily, you can properly assess the trend of your business volume, and more importantly where, when, and under whose supervision cash deficits were created. These security measures are an invaluable resource to prevent cash leakage and heighten transparency so that you can take action whenever you detect inconsistencies or cash deficits. By minimizing your risk, while also preempting the other form of risk: inventory loss, you will be able to maximize the efficiency of your supervision and management capabilities.

## Intersoftware Compatibility

**LaundroMax** software is compatible with other Arbelsoft programs including CleanMax, TailorMax, and/or SyncMax (for multiple stores). So no matter what service in this sector that your business provides, Arbelsoft products will be able to accommodate your business needs.



We understand that there a countless number of complexities that you must account for daily as a professional in the Dry cleaning industry. **CleanMax is the only** system on which tickets with garment type, color & patterns (up to 24 colors & 8 patterns), upcharge, press only, and alteration options can be simultaneously processed and issued on the same screen without going back and forth between several screens. CleanMax also provides an option that lets you save customer preferences under their account, so that these details can provide crystal clear direction for perfect task execution every time. Customer satisfaction is the crux of any successful enterprise and CleanMax can help you achieve it.

CleanMax is not static. Your business is constantly evolving and changing, and a program that helps your business should be able to do the same thing. This is why CleanMax is set up in three different levels of intricacy where the first level is ideal for smaller stores where owners interact face-to-face with walk in customers, and the third level which supports



larger scale enterprises for handling pick up and deliveries and account receivable functions. All Arbelsoft products are compatible with one another, so if your business supports both dry cleaning and tailoring services, you can take advantage of both in a consolidated interface.

CleanMax also supports automatic tag assignments, pre or post assignments, and both the Piece and Lot System with AssembleMax, own garment assembly system.

## Secured Credit Card Processing EMV Certified

In October 2015, the merchant liability shift has made the previous methods of credit card transaction obsolete. In order to prevent disruption of services to our customers, Arbelsoft has worked closely with Ignite-Firstdata as well as terminal manufacturers to keep our customers up to date with the latest security measures and merchant processing standards. As before, customers will be able to process recurring billing to their customers as well as being able to accept the new EMV standard credit and debit cards.

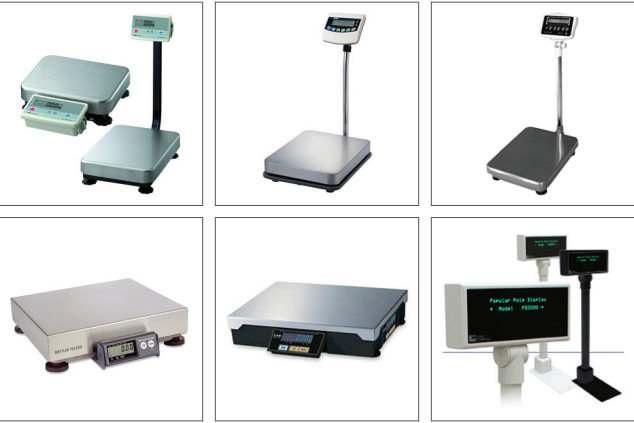
Ignite-Firstdata has a global footprint of 6 million merchants, the largest in the payments industry. The company handles 45% of all US credit and debit transactions. In working hand in hand with Ignite-Firstdata, we have pro-

cured guaranteed rates with a base of 2.2% ~ 2.8% including fees, with the rates being adjusted based on monthly volume. Customers can rest assured with the belief that their business interests are taken care, safeguarded by Arbelsoft and Ignite-Firstdata.

## Most Common Devices are interfaced

Mettler Toledo, A&D and CAS are the most common POS scales interfaced with LaundroMax. Data concerning the customer drop-off laundry is than entered into the computer automatically upon which the machine's operation costs are calculated promptly. You can also enter the drop-off order data down to the decimal point to charge the customer accurately and calculate operational charges more precisely. It also comes interfaced with Logic Controls, a customer pole display that shows the amount due, and an additional feature called "SoundMax", which greets customers with an announcement.

For enhanced security measures, LaundroMax also uses a dual or quadro cash drawer control technology, created by Posiflex and APG. This sets secure and specific access to cash drawers for each employee shift, so that you can exercise accurate and strong cash control.



## Employee Attendance & Payroll Control

Control and manage your employee attendance with a feature that accurately tracks employee attendance with a "Clock-In" and "Clock-Out" system. LaundroMax can issue unique 3 digit passwords for each of your employees which they can use for checking in and checking out on each work day. LaundroMax is also compatible with a magnetic strip card that your employees can scan, or a finger print reader that your employees can simply place their finger on the device for a super fast "Clock-in" and "Clock-out" process. Using these statistics, the system also provides an easy automatic payroll calculator.







## SOFTWARE

### LaundroMax-Standard/Full SyncMax Back Office (Replication) Other Software

- CleanMax
- TailorMax
- ShoeMax
- Ignite-Firstdata
- Integrated EMV Credit Card processing

### Optional Features

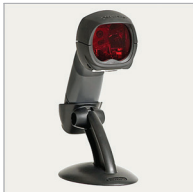
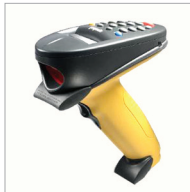
- Pin Pad for Debit Card
- Caller ID
- Auto Dialer
- PC Camera
- Customer Pole display
- Finger Print Reader
- Signature Pad
- Credit Card Readers

## RELIABILITY

- Durable Hardware from entrusted Brands, Dell, Microsoft, ELO, Star, Zebra, Motorola, Metrologic, Datalogic, WASP, Honeywell, DigitalPersona, Verifone, Logitec.
- Rapid responsive and durable software construction.
- Secure tracking functions for every transaction.
- Accurate Closing Statements & Sales Summary.
- Flexibility & Customization, Match any size & processing
- Microsoft SQL database.
- Data replication for consolidated report.
- Portable and remote hosting backup.
- Credit Card data encryption.
- LaundroMax-only screen for virus protection & prohibited date change.
- Real time data streaming for multiple store management.



- Enables sales of consumer goods
- Scale-interfaced computer
- Simultaneous drop off order and item sales processing
- Cash Control Functions
- Item Returns Feature
- Actual Cost Calculator
- Refund Processing Function
- Update Stock
- CCI Integration
- Infinite storage of sales items with icon customization
- Inventory Confirmation Feature
- Dual Cash Drawer Control
- Universal tax and rate entry
- 6 different pickup variations and options
- Auto Customer Recognition
- Sales History



**Item Returns Feature:** LaundroMax can process returned sales items with a module that makes it extremely quick and easy. The system will update your inventory stock automatically to accurately reflect what you have in store on the current date.

**CCI Integration:** LaundroMax has been integrated with the Card Concepts Inc's Laundry Card to account for two different cases. You can directly add funds to a customer's CCI card via the LaundroMax interface or transfer funds to account for the actual operating costs expended for completing a given customer's order.

**Actual Cost Inputs:** This feature allows employees to specify either the washer or dryer number, along with the ticket number and the exact operating costs expended for a particular order. This is a

useful function for quarterly reports and gauging margins in order to optimize operations for higher profitability. You can enter up to 4 entries.

**Refund Feature:** This feature can expedite the process of issuing refunds for sales items conveniently. The most typical case for using this feature is if a machine or reader malfunctions and fails to return a customer's money, if the machine simply does not start, or if the coin becomes jammed inside the machine slot.

**Universal tax and rate entry:** LaundroMax offers the option for implementing various sales taxes, tax exemptions for certain items, and universal taxes and rates such as GST, PST, VAT. This was built with our international customers in mind to maximize the utility of our software and POS systems.

**Dual Cash Drawer Control:** Sets secure and specific access rights and limitations to cash drawers for each employee shift so that you can exercise accurate and strong cash control. You can require pass-

words entry for employee access in order to heighten accountability and track changes in cash flow, sales, inventory, operating costs etc between shifts.

## Extensive Marketing Tools

**Coupons:** Arbelsoft offers various types of coupons for any occasion such as a holiday discounts, an anniversary sale, etc. Additionally, coupons can be applied for specific terms or by any percentage that you would like. Coupons can also be applied or printed out while issuing a ticket.

**Most Valuable Customer Search:** Our customer revenue level indicator & ranking feature allows for you to easily identify your most valuable customers. The feature uses color codes and blocks, symbolizing a default \$50 a month per block. You can customize the value of each block, view more detailed customer informa-

tion, or compare their value ranking to other customers.

**E-mail:** Linked to the report feature. Publish fully customizable notifications, coupons, letters, guides, greetings, reports etc to your customers in order to further your marketing campaign. Option of narrowing your target audience to a group of your choice.

**Store Discounts:** Applying store discounts for specific people, groups, categories or during special events for a set term.

**Addresses & Labels:** Cut costs by directly printing stored customer addresses onto your brochures. Never again do you have to waste time and energy manually affixing mailing labels onto your brochures.



## Flexibility & Customization

- Unlimited number of subcategories for the most accurate descriptions
- Can be used in combination with SyncMax and/or CleanMax
- Easily adjustable & customizable price setup
- System Level Controller – Simple, Intermediate, Advanced
- Set employee specific access rights
- Personalize your ticket style, marketing

- flyers, newsletters, coupons, etc
- **Compatible** with foreign currencies
- **Store:** Store hours, Ticket message, Security settings,
- **System:** Time Card, Rack Assignment, Drop Screen Variation
- **Customer:** Level Meter, Ranking Setup, Phone Number & Address Setup
- **Charge & Discount:** Prepayment, membership, referral, mileage plan, Additional storage, store.
- **Ticket & Tag:** Format adjustment, Extra ticket printing



## HARDWARE

### Work Station

Dell Desktop Computer  
15" ELO Touch with or without MSR  
Star Invoice printer  
Posiflex Cash Drawer

### Office Touch Station

Dell Desktop Computer  
15" ELO Touch Screen Monitor  
Star Invoice Printer  
Brother or HP Report Printer

### Office Non Touch Station

Dell Desktop Computer  
19" Flat Screen LCD Monitor  
Brother or HP Report Printer  
SyncMax (Multi-Store Management)

### Multiple Store Server for Data Replication

**Up to 24 Satellite stores:**  
Dell Power Edge R510 Server  
Intel Xeon X5650 2.66 GHz  
12GB RAM with 2008 MS SQL db

**Up to 48 Satellite stores:**  
Dell Power Edge R710 Server  
Intel Xeon X5672 3.20 GHz  
24GB RAM with 2008 MS SQL db

**Up to 96 Satellite stores:**  
Dell Power Edge R810 Server  
2x Intel Xeon E7-8837 2.67 GHz  
32GB RAM with 2008 MS SQL db

### Peripherals

#### Printers

- Star TSP143 Thermal Invoice printer
- Star TM-U220 Printer for Dry Clean Tag
- Zebra LP 2824, ShoeMax Tag
- Zebra TLP 2824, Heat Seal for Auto Garment Sorting
- Zebra GX430T, Barcode for Auto Garment Sorting

#### Scanners

- Metrologic MS 9540: Invoice Scan
- Metrologic MK 3780: UPC Code Scan
- Datalogic Quickscan: Invoice, Inventory, Rack Assign, Delivery Out
- Symbol: DS3508, DS3578: Same as Above

#### Others

**Scale:** CAS, A&D, Mettler Toledo  
**Customer Pole Display:** Logic Control  
**Sorting Conveyor:** Raillex  
**Heat Seal Press:** Hortronix STX6



## OUR VALUES



At Arbelsoft, our clients' interests come first. We strive to establish a successful precedent in everything that we do so that we can ensure that we provide you with the best products and services.

We pride the professional quality of our work. We promote an organizational culture that emphasizes the importance of the quality of our relationships with clients and not the quantity of relationships bridged. By fostering these values in every employee we hire into our company, we are confident that success and customer satisfaction will continue to follow us as a firm. Our primary assets consist of our human resources and our reputation. If we diminish the quality of the first asset, we are

undermining our reputation as a whole. We will never compromise the quality of our employee credentials. Therefore for every employee that we do invite to join our team, we place a high level of trust in their intelligence, competency and expertise and that they will always act in your best interest.

We encourage our employees to constantly initiate creative and innovative new solutions for you, especially as newer forms of technology that can improve our software become available. You will always be the first to enjoy our new innovations and software updates because we want our products to enhance your business to the fullest of its capabilities.



### LIVE DEMO

If you want to learn more about LaundroMax or any of our other products, you can schedule an appointment for a live demo as made possible via [www.showmypc.com](http://www.showmypc.com).

Our live demo is a wonderful opportunity for you to see and experience our interface and have all of your questions answered. We will also walk you through our program at first, and give you your own time to explore the program on your own.

Request an appointment today at  
[www.arbelsoft.com/solutions/livedemo.php](http://www.arbelsoft.com/solutions/livedemo.php)

### LIVE TRAINING

Arbelsoft products are very user friendly, and our customers have found it extremely quick and easy to accustom themselves to using its features. However, we are always there for our clients and pay special care and attention to new users who are in the process of familiarizing themselves with our program. Our program can enhance your business, and we want you to be able to utilize the product to the fullest of its capabilities. If you happen to have any additional questions about specific features or if you would like to learn more about a certain process, we would be happy to give you live training.

[www.arbelsoft.com/support/livetraining.php](http://www.arbelsoft.com/support/livetraining.php)



### AVAILABLE DOWNLOADS

#### Manuals/Guides

- Software Installation Guide
- System Connection Guide
- Maintenance Guide
- AssembleMax Installation Guide
- User Manual CleanMax/ShoeMax

#### Documents/Forms

- Customer Setup info.
- Credit application
- Integrated Credit Card applications

#### Brochures

- CleanMax
- AssembleMax
- LaundroMax
- TailorMax
- ShoeMax

#### Softwares

- Software Downloads
- Software Updates
- Software Upgrades
- Drivers for Arbelsoft Standard
- Drivers for Compatible Hardware

## CUSTOMIZATION

If there are any program requests specific to your business or some sort of feature that you would like that is not on the software you currently own, we can create a custom made addition to any version of any Arbelsoft software you are currently using. Simply contact us with the specifics of your request so that we can make sure your software is the most accommodating of your needs.

#### Support Hours

24/7 support except U.S. major holidays

## PASSWORDS

We use a password system to protect your security.

**All passwords:** Initial Activation Passwords, Store Information Passwords, Annual Passwords, Monthly Passwords, Update Passwords and Upgrade Passwords can conveniently be received or retrieved from our website!

## SERVICES

Customer Satisfaction is our top priority. We have experienced a rapid growth in popularity due to customer referrals by those who were impressed with the quality, reliability, and promptness of our customer service.

Although our system has been designed to be extremely user friendly, we would like to provide you adequate resources so that you can become comfortable with using our products as quickly as possible. Refer to our list of available downloads, which are full of tools we have created to help our customers.

Our employees are always ready to assist you!

### INITIAL TRAINING

We provide free initial training for all of our customers where we can walk you through all the features of our program and make sure that you are comfortable with them.

- Help you customize your system so that it meets your demands
- How to use every one of our features
- How to set up your system
- How to utilize and install hardware
- Specialized training for multiple store operations (SyncMax)
- Answers to your questions & uncertainties
- Instructions that have been tailored to your managers and other key personnel

### CUSTOMER CARE PLANS

#### BENEFITS

- Trouble shooting in case of technical difficulties via telephone or internet
- Free software update and hardware supports and repair or replacement
- Loan for major hardware, computer, monitor and printer is available for Gold or higher

#### SILVER EDITION

- Software Updates

#### GOLD EDITION

- Software & Hardware support include labor

#### DIAMOND EDITION

- Full Coverage include Labor & Parts Replacement

#### BACKUPMAX

- Remote data backup Service



**LESS WORK, MORE PROFITS**

**CLEANMAX** <sup>®</sup>  
We Understand Dry Cleaning

 **ArbelSoft**  
[www.arbelsoft.com](http://www.arbelsoft.com)  
454 Main St. Suite 6 Fort Lee, NJ 07024  
Tel (877)939-1212 | Fax (201)363-0505

**TAILORMAX** <sup>®</sup>  
Confident Choice for Professionals  
**SHOEMAX** <sup>®</sup>  
The Only Exclusive POS System in the World  
**SYNCMAX** <sup>®</sup>  
Multi-Store Management Solutions